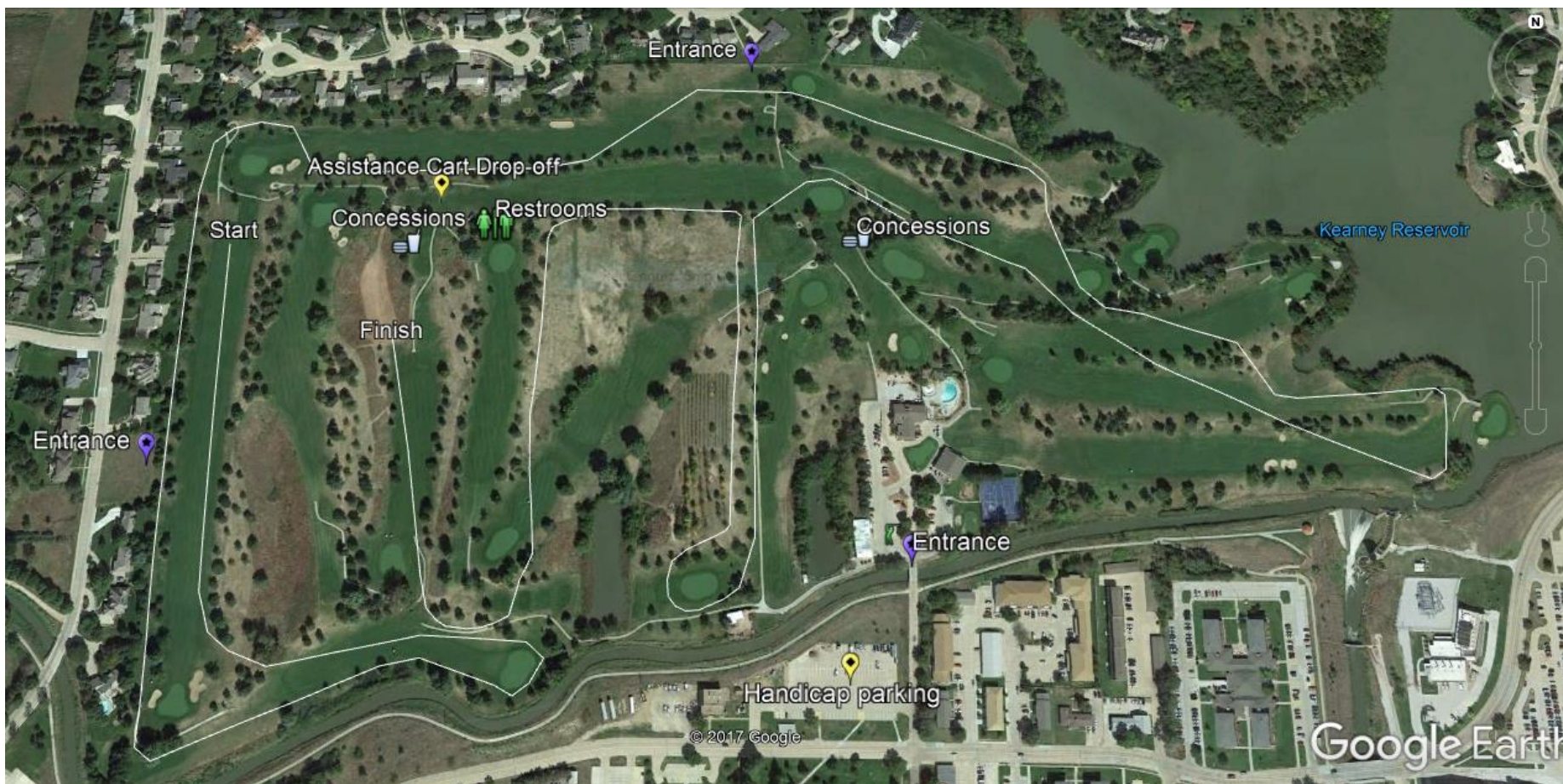


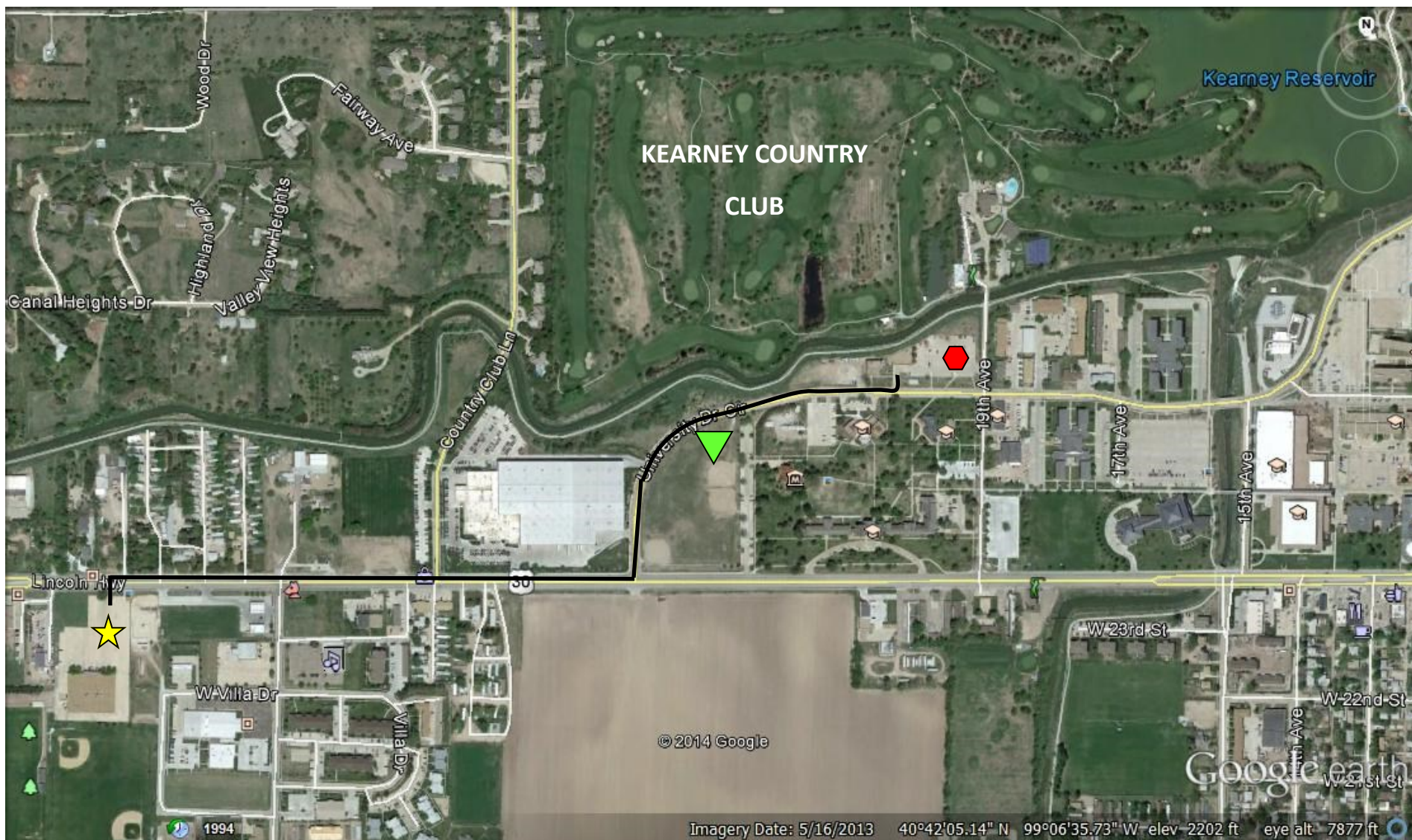
# *UNK Cross Country Invitational*



## *Kearney Country Club*



### *Fan Map*



# TEAM & FAN PARKING MAP



-  Team Bus & Fan Parking - take shuttle to Course
-  Lot 20—Handicap, Media Parking / Main Entrance to Course—Shuttle unloading / loading

-  UNK Track Throwing Facility—Team **Car and Van** Only!! Parking!!
-  Free shuttle route from Buckle Screenprinting lot to KCC.

***UNK Cross Country Invitational***  
*Kearney Country Club*  
*Course Map*

